

DATA SHEET

FortiWeb™

Available in:



Web Application and API Protection

FortiWeb 100E, 400E, 600E, 1000E, 2000F, 3000F, 4000F, VM, and Container

FortiWeb is a web application firewall (WAF) that protects web applications and APIs from attacks that target known and unknown exploits and helps maintain compliance with regulations.



Using machine learning to model each application, FortiWeb defends applications from known vulnerabilities and from zero-day threats. High performance physical, virtual appliances and containers deploy on-site or in the public cloud to serve any size of the organization — from small businesses to service providers, carriers, and large enterprises.



Web Application Protection

Multi layer protection against the OWASP Top 10 application attacks including machine learning to defend against known and unknown attacks.



API Protection

Protect your APIs from malicious actors by automatically enforcing positive and negative security policies. Seamlessly integrate API security into your CI/CD pipeline.



Bot Mitigation

Protect websites, mobile applications, and APIs from automated attacks with advanced bot mitigation that accurately differentiates between good bot traffic and malicious bots. FortiWeb Bot Mitigation provides the visibility and control you need without slowing down your users with unnecessary captchas or challenges.

Highlights

- Machine learning that detects and blocks threats while minimizing false positives
- Advanced Bot Mitigation effectively protect web assets without imposing friction on legitimate users
- Protection for APIs, including those used to support mobile applications
- Enhanced protection with Fortinet Security Fabric integration
- Visual analytics tools for advanced threat insights
- Third-party integration and virtual patching



FortiCare Worldwide 24/7 Support

support.fortinet.com



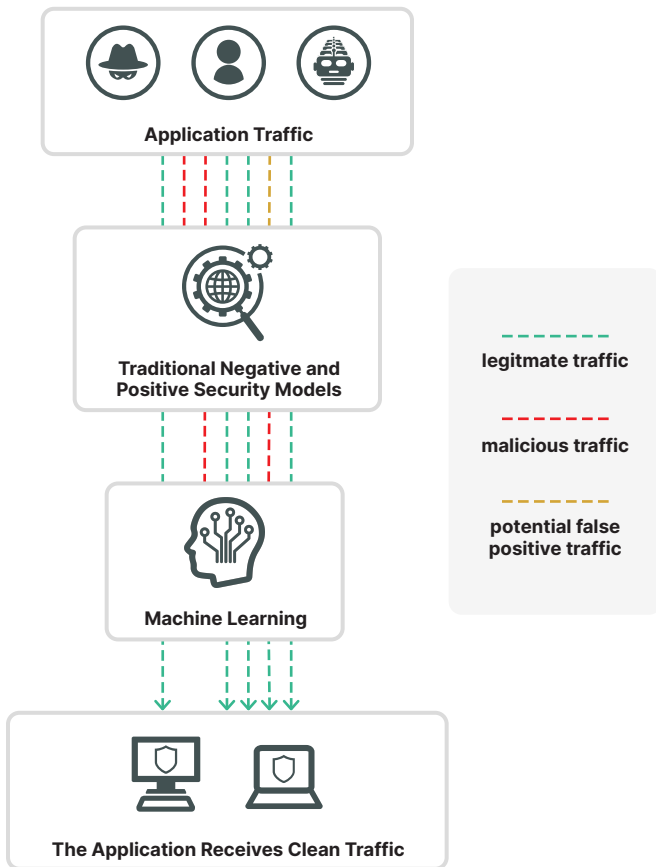
FortiGuard Security Services

www.fortiguard.com

Third-Party Certification



HIGHLIGHTS



FortiWeb goes beyond traditional negative and positive security models (attack signatures, IP address reputation, protocol validation, and so on), and applies a second layer of machine learning-based analytics to detect and block malicious anomalies while minimizing false positives.

Machine Learning Improves Detection and Drives Operational Efficiency

FortiWeb’s multi-layer approach provides two key benefits: superior threat detection and improved operational efficiency.

FortiWeb’s ability to detect anomalous behavior relative to the specific application being protected enables the solution to block unknown, never-before-seen exploits, providing your best protection against zero-day attacks targeting your application.

Operationally, FortiWeb machine learning relieves you of time-consuming tasks such as remediating false positives or manually tuning WAF rules. FortiWeb continually updates the model as your application evolves, so there is no need to manually update rules every time you update your application. FortiWeb enables you to get your code into production faster, eliminating the need for time-consuming manual WAF rules tuning and troubleshooting the false positives that plague less advanced WAFs. **Block Zero Day Threats**



Comprehensive Web Application Security

Using an advanced multi-layered and correlated approach, FortiWeb provides complete security for your web-based applications from the OWASP Top 10 and many other threats. FortiWeb’s first layer of defense uses traditional WAF detection engines (e.g. attack signatures, IP address reputation, protocol validation, and more) to identify and block malicious traffic, powered by intelligence from Fortinet’s industry leading security research from FortiGuard Labs. FortiWeb’s machine learning detection engine then examines traffic that passes this first layer, using a continuously updated model of your application to identify malicious anomalies and block them as well.

API Protection

Fueling the digital transformation APIs have become increasingly popular, providing the backbone for mobile applications, automated business to business operations and ease of management across applications. However, with their popularity they also increase the attack surface with additional exposed application surfaces that organizations must secure. Fortinet’s FortiWeb web application firewall provides the right tools to address threats to APIs. FortiWeb integrates out of the box policies together with an automatically generated positive security model policy that is based on your organization’s schema specification (OpenAPI, XML and generic JSON are supported schemas) to protect against API exploits. FortiWeb schema validation can be integrated into the CI/CD pipeline, automatically generating an updated positive security model policy once the API is updated.

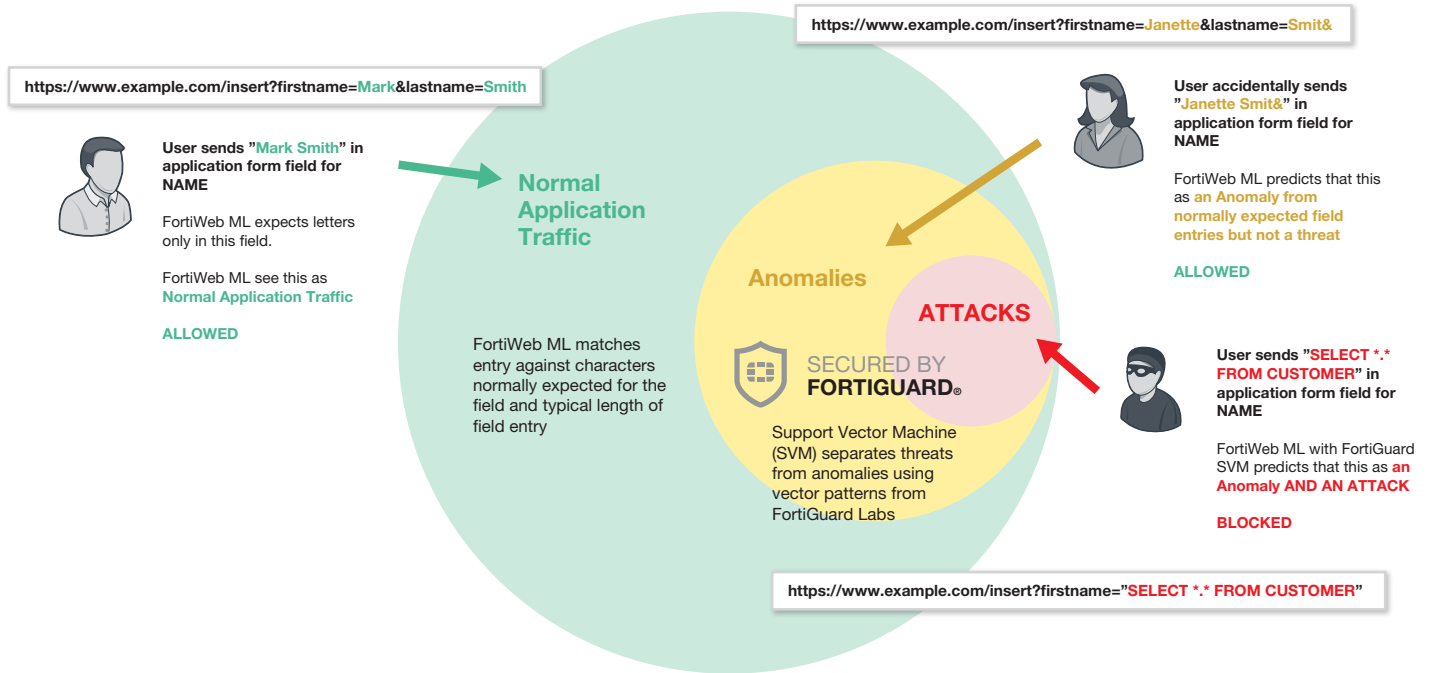
Bot Mitigation

FortiWeb protects against automated bots, webs scrapers, crawlers, data harvesting, credential stuffing and other automated attacks to protect your web assets, mobile APIs, applications, users and sensitive data. Combining machine learning with policies such as threshold based detection, Bot deception and Biometrics based detection with superior good bot identification FortiWeb is able to block malicious bot attacks while reducing friction on legitimate users. With advanced tracking techniques FortiWeb can differentiate between humans, automated requests and repeat offenders, track behavior over time to better identify humans from bots and enforce CAPTCHA challenges when required. Together with FortiView, FortiWeb’s graphical analysis dashboard organizations can quickly identify attacks and differentiate from good bots and legitimate users.



HIGHLIGHTS

FortiWeb's machine learning accurately detects anomalies and identifies which are threats. Unlike prevailing auto-learning detection models used by other WAF vendors that treat every anomaly as a threat, FortiWeb's precision nearly eliminates false positive detections and catches attack types that others cannot.

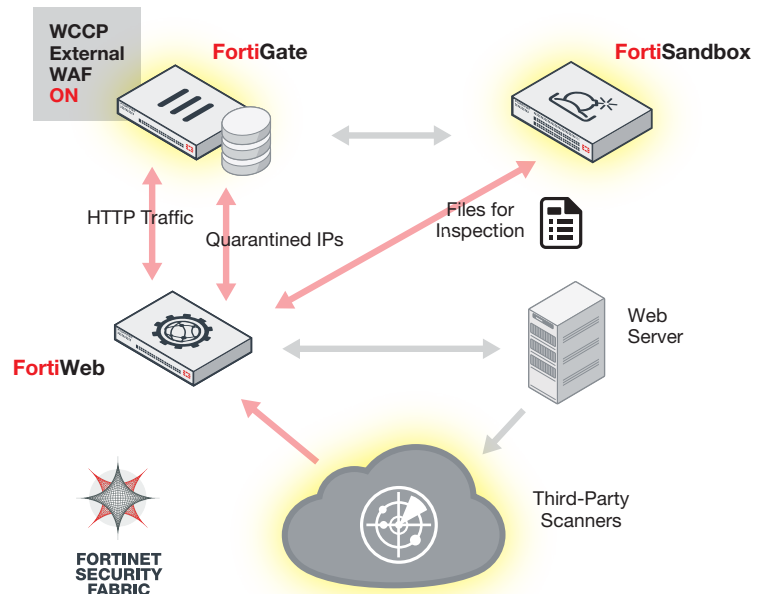


FortiWeb's AI-based machine learning evaluates application requests to determine if they are normal, benign anomalies, or anomalies that are threats.

Deep Integration into the Fortinet Security Fabric and Third-Party Scanners

As the threat landscape evolves, many new threats require a multi-pronged approach for protecting web-based applications. Advanced Persistent Threats that target users can take many different forms than traditional single-vector attack types and can evade protections offered only by a single device. FortiWeb's integration with FortiGate and FortiSandbox extend basic WAF protections through synchronization and sharing of threat information to both deeply scan suspicious files and share infected internal sources.

FortiWeb also provides integration with leading third-party vulnerability scanners including Acunetix, HP WebInspect, IBM AppScan, Qualys, ImmuniWeb and WhiteHat to provide dynamic virtual patches to security issues in application environments. Vulnerabilities found by the scanner are quickly and automatically turned into security rules by FortiWeb to protect the application until developers can address them in the application code.



Integration with other Fortinet Security Fabric elements, including FortiGate and FortiSandbox, delivers APT protection and extends vulnerability scanning with leading third-party providers.



HIGHLIGHTS

Solving the Challenge of False Threat Detections

False positive threat detections can be very disruptive and force many administrators to loosen security rules on their web application firewalls to the point where many often become a monitoring tool rather than a trusted threat avoidance platform. The installation of a WAF may take only minutes, however fine-tuning can take days, or even weeks. Even after setup, a WAF can require regular checkups and tweaks as applications and the environment change.

FortiWeb's AI-based machine learning addresses false positive and negative threat detections without the need to tediously manage whitelists and fine-tune threat detection policies. With near 100% accuracy, the dual layer machine learning engines detect anomalies and then determine if they are threats unlike other methods that block all anomalies regardless of their intent. When combined with other tools, including user tracking, session tracking, and threat weighting, FortiWeb virtually eliminates all false detection scenarios.

Advanced Graphical Analysis and Reporting

FortiWeb includes a suite of graphical analysis tools called FortiView. Similar to other Fortinet products such as FortiGate, FortiWeb gives administrators the ability to visualize and drill-down into key elements of FortiWeb such as server/IP configurations, attack and traffic logs, attack maps, OWASP Top 10 attack categorization, and user activity. FortiView for FortiWeb lets administrators quickly identify suspicious activity in real time and address critical use cases such as origin of threats, common violations, and client/device risks.

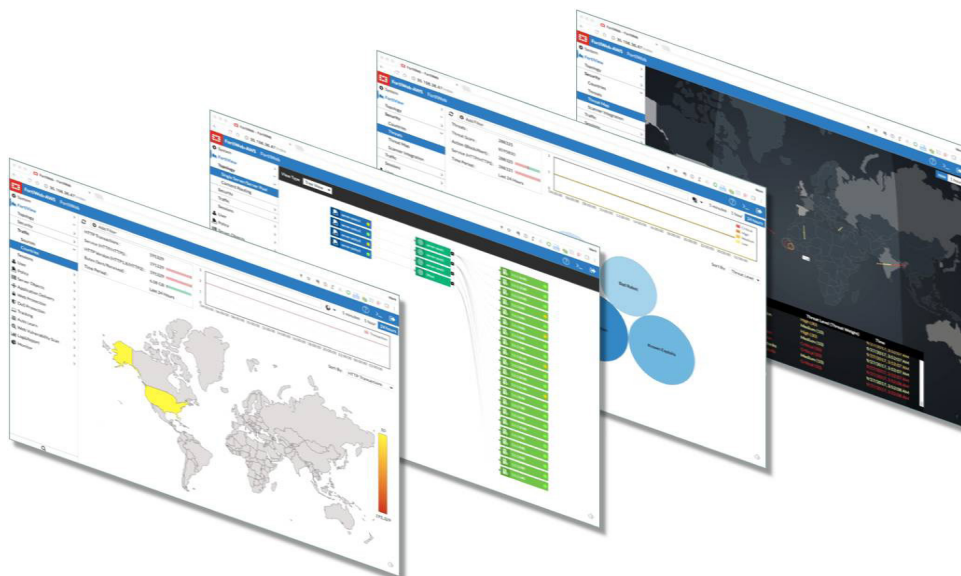
Secured by FortiGuard

Fortinet's Award-winning FortiGuard Labs is the backbone for many of FortiWeb's layers in its approach to application security. Offered as five separate options, you can choose the FortiGuard services you need to protect your web applications. FortiWeb IP address reputation service protects you from known attack sources like botnets, spammers, anonymous proxies, and sources known to be infected with malicious software.

FortiWeb Security Service is designed just for FortiWeb including items such as application layer signatures, machine learning threat models, malicious robots, suspicious URL patterns, and web vulnerability scanner updates. Credential Stuffing Defense checks login attempts against FortiGuard's list of compromised credentials and can take actions ranging from alerts to blocking logins from suspected stolen user ids and passwords. The FortiWeb Cloud Sandbox subscription enables FortiWeb to integrate with Fortinet's cloud-sandbox service. Finally, FortiWeb offers FortiGuard's top-rated antivirus engine that scans all file uploads for threats that can infect your servers or other network elements.

VM and Public Cloud Options

FortiWeb provides maximum flexibility in supporting your virtual and hybrid environments. The virtual versions of FortiWeb support all the same features as our hardware-based devices and can be deployed in VMware, Microsoft Hyper-V, Citrix XenServer, Open Source Xen, VirtualBox, KVM, and Docker platforms. FortiWeb is also available for AWS, Azure, Google Cloud, and Oracle Cloud as a VM, and as WAF as a Service on AWS, Azure, and Google Cloud. For more information, see Fortiweb-Cloud.com.



FortiView for FortiWeb

FEATURES

Deployment Options

- Reverse Proxy
- Inline Transparent
- True Transparent Proxy
- Offline Sniffing
- WCCP

Web Security

- AI-based Machine Learning
- Automatic profiling (white list)
- Web server and application signatures (black list)
- IP address reputation
- IP address geolocation
- HTTP RFC compliance
- Native support for HTTP/2
- OpenAPI 3.0 verification
- WebSocket protection and signature enforcement
- Man in the Browser (MiTB) protection

Application Attack Protection

- OWASP Top 10
- Cross Site Scripting
- SQL Injection
- Cross Site Request Forgery
- Session Hijacking
- Built-in Vulnerability Scanner
- Third-party scanner integration (virtual patching)
- File upload scanning with AV and sandbox

Security Services

- Web services signatures
- XML and JSON protocol conformance
- Malware detection
- Virtual patching
- Protocol validation
- Brute force protection
- Cookie signing and encryption
- Threat scoring and weighting
- Syntax-based SQLi detection
- HTTP Header Security
- Custom error message and error code handling
- Operating system intrusion signatures
- Known threat and zero-day attack protection
- L4 Stateful Network Firewall
- DoS prevention
- Advanced correlation protection using multiple security elements
- Data leak prevention
- Web Defacement Protection

Application Delivery

- Layer 7 server load balancing
- URL Rewriting
- Content Routing
- HTTPS/SSL Offloading
- HTTP Compression
- Caching

Authentication

- Active and passive authentication
- Site Publishing and SSO
- RSA Access for 2-factor authentication
- LDAP, RADIUS, and SAML support
- SSL client certificate support
- CAPTCHA and Real Browser Enforcement (RBE)

Management and Reporting

- Web user interface
- Command line interface
- FortiView graphical analysis and reporting tools
- Central management for multiple FortiWeb devices
- Active/Active HA Clustering
- REST API
- Centralized logging and reporting
- User/device tracking
- Real-time dashboards
- Bot dashboard
- OWASP Top 10 attack categorization
- Geo IP Analytics
- SNMP, Syslog and Email Logging/Monitoring
- Administrative Domains with full RBAC

Other

- IPv6 Ready
- HTTP/2 to HTTP 1.1 translation
- HSM Integration
- Seamless PKI integration
- Attachment scanning for ActiveSync/MAPI applications, OWA, and FTP
- High Availability with Config-sync for syncing across multiple active appliances
- Auto setup and default configuration settings for simplified deployment
- Setup Wizards for common applications and databases
- Preconfigured for common Microsoft applications; Exchange, SharePoint, OWA
- OpenStack support for FortiWeb VMs
- Predefined security policies for Drupal and Wordpress applications
- WebSockets support



SPECIFICATIONS



| | FORTIWEB 100E | FORTIWEB 400E | FORTIWEB 600E |
|--|--|---|---|
| Hardware | | | |
| 10/100/1000 Interfaces (RJ-45 ports) | 4 | 4 GE RJ45, 4 SFP GE | 4 GE RJ45 (2 bypass), 4 SFP GE |
| 10G BASE-SR SFP+ Ports | — | — | — |
| SSL/TLS Processing | Software | Software | Hardware |
| USB Interfaces | 2 | 2 | 2 |
| Storage | 32 GB SSD | 480 GB SSD | 480 GB SSD |
| Form Factor | Desktop | 1U | 1U |
| Power Supply | Single | Single | Dual |
| System Performance | | | |
| Throughput | 50 Mbps | 250 Mbps | 750 Mbps |
| Latency | <5ms | <5ms | <5ms |
| High Availability | Active/Passive, Active/Active Clustering | Active/Passive, Active/Active Clustering | Active/Passive, Active/Active Clustering |
| Application Licenses | Unlimited | Unlimited | Unlimited |
| Administrative Domains | — | 32 | 32 |
| All performance values are "up to" and vary depending on the system configuration. | | | |
| Dimensions | | | |
| Height x Width x Length (inches) | 1.61 × 8.27 × 5.24 | 1.73 × 17.24 × 16.38 | 1.73 × 17.24 × 16.38 |
| Height x Width x Length (mm) | 41 × 210 × 133 | 44 × 438 × 416 | 44 × 438 × 416 |
| Weight | 2.3 lbs (1.1 kg) | 22 lbs (9.97 kg) | 22 lbs (9.97 kg) |
| Rack Mountable | Optional | Yes | Yes |
| Environment | | | |
| Power Required | 100–240V AC, 50–60 Hz | 100–240V AC, 50–60 Hz | 100–240V AC, 50–60 Hz |
| Maximum Current | 110V/1.2A, 220V/1.2A | 100V/5A, 240V/3A | 100V/5A, 240V/3A |
| Power Consumption (Average) | 18 W | 109 W | 109 W |
| Heat Dissipation | 74 BTU/h | 446.3 BTU/h | 446.3 BTU/h |
| Operating Temperature | 32–104°F (0–40°C) | 32–104°F (0–40°C) | 32–104°F (0–40°C) |
| Storage Temperature | -13–158°F (-25–70°C) | -13–158°F (-25–70°C) | -13–158°F (-25–70°C) |
| Humidity | 10–90% non-condensing | 10–90% non-condensing | 10–90% non-condensing |
| Compliance | | | |
| Safety Certifications | FCC Class A Part 15, RCM, VCCI, CE, UL/cUL, CB | FCC Class A Part 15, RCM, VCCI, CE, UL/CB/cUL | FCC Class A Part 15, RCM, VCCI, CE, UL/CB/cUL |



SPECIFICATIONS



| | FORTIWEB 1000E | FORTIWEB 2000F | FORTIWEB 3000F | FORTIWEB 4000F |
|--|--|--|--|--|
| Hardware | | | | |
| 10/100/1000 Interfaces (RJ45 ports) | 6 (4 bypass), 4x SFP GE (non-bypass) | 4GE (4 bypass), 4 SFP GE | 8GE (8 bypass) | 8GE (8 bypass) |
| 10G BASE-SR SFP+ Ports | 2 | 4 | 10 (2 bypass) | 10 (2 bypass) |
| 40G QSFP | - | - | - | 2 bypass |
| SSL/TLS Processing | Hardware | Hardware | Hardware | Hardware |
| USB Interfaces | 2 | 2 | 2 | 2 |
| Storage | 2× 1 TB | 2 × 480 GB SSD | 2 × 960 GB SSD | 2 × 960 GB SSD |
| Form Factor | 2U | 2U | 2U | 2U |
| Power Supply | Dual Hot Swappable | Dual Hot Swappable | Dual Hot Swappable | Dual Hot Swappable |
| System Performance | | | | |
| Throughput | 1.3 Gbps | 5 Gbps | 10 Gbps | 70 Gbps |
| Latency | <5ms | <5ms | <5ms | <5ms |
| High Availability | Active/Passive, Active/Active Clustering | Active/Passive, Active/Active Clustering | Active/Passive, Active/Active Clustering | Active/Passive, Active/Active Clustering |
| Application Licenses | Unlimited | Unlimited | Unlimited | Unlimited |
| Administrative Domains | 64 | 96 | 96 | 192 |
| All performance values are "up to" and vary depending on the system configuration. | | | | |
| Dimensions | | | | |
| Height x Width x Length (inches) | 3.46 × 16.93 × 19.73 | 3.5 × 17.2 × 20.8 | 3.5 × 17.5 × 22.6 | 3.5 × 17.5 × 22.6 |
| Height x Width x Length (mm) | 88 × 430 × 501.20 | 88 × 438 × 530 | 88 × 444 × 574 | 88 × 444 × 574 |
| Weight | 28 lbs (12.8 kg) | 33 lbs (15 kg) | 56.2 lbs (22.5 kg) | 56.2 lbs (22.5 kg) |
| Rack Mountable | Yes, with flanges | Yes | Yes | Yes |
| Environment | | | | |
| Power Required | 100–240V AC, 50–60 Hz | 100–240V AC, 60–50 Hz | 100–240V AC, 60–50 Hz | 100–240V AC, 60–50 Hz |
| Maximum Current | 100V/5A, 240V/3A | 120V/6A, 240V/3A | 120V/2.6A, 240V/1.3A | 120V/3A, 240V/1.5A |
| Power Consumption (Average) | 140 W | 200 W | 200 W | 248.5 W |
| Heat Dissipation | 471 BTU/h | 1433 BTU/h | 1045.5 BTU/h | 1219.8 BTU/h |
| Operating Temperature | 32–104°F (0–40°C) | 32–104°F (0–40°C) | 32–104°F (0–40°C) | 32–104°F (0–40°C) |
| Storage Temperature | -4–158°F (-20–70°C) | -4–158°F (-20–70°C) | -4–158°F (-20–70°C) | -4–158°F (-20–70°C) |
| Humidity | 5–90% non-condensing | 5–90% non-condensing | 5–90% non-condensing | 5–90% non-condensing |
| Compliance | | | | |
| Safety Certifications | FCC Class A Part 15, RCM, VCCI, CE, UL/CB/cUL | FCC Class A Part 15, RCM, VCCI, CE, UL/CB/cUL | FCC Class A Part 15, RCM, VCCI, CE, UL/CB/cUL | FCC Class A Part 15, RCM, VCCI, CE, UL/CB/cUL |



SPECIFICATIONS

| VIRTUAL MACHINES | FORTIWEB-VM (1 VCPU) | FORTIWEB-VM (2 VCPU) | FORTIWEB-VM (4 VCPU) | FORTIWEB-VM (8 VCPU) |
|---|--|---------------------------------|---------------------------------|---------------------------------|
| System Performance | | | | |
| HTTP Throughput | 25 Mbps | 100 Mbps | 500 Mbps | 3 Gbps |
| Application Licenses | Unlimited | Unlimited | Unlimited | Unlimited |
| Administrative Domains | 4 to 64 based on the amount of memory allocated | | | |
| Virtual Machine | | | | |
| Hypervisor Support | VMware, Microsoft Hyper-V, Citrix XenServer, Open Source Xen, VirtualBox, KVM, Amazon Web Services (AWS), Microsoft Azure, Google Cloud, and Oracle Cloud. Please see FortiWeb VM Installation Guide for versions supported. | | | |
| vCPU Support (Minimum / Maximum) | 1 | 2 | 2 / 4 | 2 / 8 |
| Network Interface Support (Minimum / Maximum) | 1 / 10 | 1 / 10 | 1 / 10 | 1 / 10 |
| Storage Support (Minimum / Maximum) | 40 GB / 2 TB | 40 GB / 2 TB | 40 GB / 2 TB | 40 GB / 2 TB |
| Memory Support (Minimum / Maximum) | 1,024 MB / Unlimited for 64-bit | 1,024 MB / Unlimited for 64-bit | 1,024 MB / Unlimited for 64-bit | 1,024 MB / Unlimited for 64-bit |
| Recommended Memory | 8 GB | 8 GB | 8 GB | 8 GB |
| High Availability Support | Yes | Yes | Yes | Yes |

Actual performance values may vary depending on the network traffic and system configuration. Performance metrics were observed using a Dell PowerEdge R710 server (2x Intel Xeon E5504 2.0 GHz 4 MB Cache) running VMware ESXi 5.5 with 4 GB of vRAM assigned to the 4 vCPU and 8 vCPU FortiWeb Virtual Appliance and 4 GB of vRAM assigned to the 2 vCPU FortiWeb Virtual Appliance.

| CONTAINER APPLIANCES | FORTIWEB-VMC01 | FORTIWEB-VMC02 | FORTIWEB-VMC04 | FORTIWEB-VMC08 |
|---|---|----------------|----------------|----------------|
| System Performance | | | | |
| HTTP Throughput (Maximum) | 25 Mbps | 100 Mbps | 500 Mbps | 3 Gbps |
| Application Licenses | Unlimited | Unlimited | Unlimited | Unlimited |
| Administrative Domains | 4 to 64 based on the amount of memory allocated | | | |
| Virtual Appliance | | | | |
| Container Manager Support | Docker | | | |
| Network Interface Support (Minimum / Maximum) | 1 / 10 | 1 / 10 | 1 / 10 | 1 / 10 |
| Storage Support (Minimum / Maximum) | 30 GB / 500 GB | 30 GB / 500 GB | 30 GB / 500 GB | 30 GB / 500 GB |
| Memory Support (Minimum) | 4 GB | 4 GB | 4 GB | 4 GB |
| Recommended Memory | 8 GB | 8 GB | 8 GB | 8 GB |
| High Availability Support | No | No | No | No |

Throughputs and other metrics are maximum values permitted for each version. Actual performance values may vary depending on the network traffic and system configuration.



ORDER INFORMATION

| Product | SKU | Description |
|---------------------------|-------------|--|
| FortiWeb 100E | FWB-100E | Web Application Firewall — 4x GE RJ45 ports, 4 GB RAM, 1x 32 GB SSD storage. |
| FortiWeb 400E | FWB-400E | Web Application Firewall — 4x GE RJ45 ports, 4x GE SFP ports, 480 GB SSD storage. |
| FortiWeb 600E | FWB-600E | Web Application Firewall — 4x GE RJ45 ports (2x bypass), 4x GE SFP ports, 480 GB SSD storage. |
| FortiWeb 1000E | FWB-1000E | Web Application Firewall — 2x 10 GE SFP+ ports, 2x GE RJ45 ports, 4x GE RJ45 bypass ports, 4x GE SFP ports, dual AC power supplies, 2 TB storage. |
| FortiWeb 2000F | FWB-2000F | Web Application Firewall - 4 x 10GE SFP+ ports, 4 x GE RJ45 bypass ports, 4 x GE SFP ports, 2 x GE management ports, dual AC power supplies, 2x480GB SSD storage. |
| FortiWeb 3000F | FWB-3000F | Web Application Firewall - 10 x 10GE SFP+ ports (2 bypass), 8 x GE RJ45 bypass ports, 2 x GE management ports, dual AC power supplies, 2x960GB SSD storage. |
| FortiWeb 4000F | FWB-4000F | Web Application Firewall - 2 x 40GE bypass ports, 10 x 10GE SFP+ ports (2 bypass), 8 x GE RJ45 bypass ports, 2 x GE management ports, dual AC power supplies, 2x960GB SSD storage. |
| FortiWeb-VM01 | FWB-VM01 | FortiWeb-VM, up to 1 vCPU supported. 64-bit OS. |
| FortiWeb-VM02 | FWB-VM02 | FortiWeb-VM, up to 2 vCPUs supported. 64-bit OS. |
| FortiWeb-VM04 | FWB-VM04 | FortiWeb-VM, up to 4 vCPUs supported. 64-bit OS. |
| FortiWeb-VM08 | FWB-VM08 | FortiWeb-VM, up to 8 vCPUs supported. 64-bit OS. |
| FortiWeb-VMC01 | FWB-VMC01 | FWB-VMC01 for container-based environments. Up to 25 Mbps throughput. |
| FortiWeb-VMC02 | FWB-VMC02 | FWB-VMC02 for container-based environments. Up to 100 Mbps throughput. |
| FortiWeb-VMC04 | FWB-VMC04 | FWB-VMC04 for container-based environments. Up to 500 Mbps throughput. |
| FortiWeb-VMC08 | FWB-VMC08 | FWB-VMC08 for container-based environments. Up to 2 Gbps throughput. |
| Central Manager 10 | FWB-CM-BASE | FortiWeb Central Manager license key, manage up to 10 FortiWeb devices, VMware vSphere. |
| Central Manager Unlimited | FWB-CM-UL | FortiWeb Central Manager license key, manage unlimited number of FortiWeb devices, VMware vSphere. |

The following SKUs adopt the annual subscription licensing scheme:

| Product | SKU | Description |
|--------------------------|------------------------|---|
| FortiWeb-VM01-S Standard | FC1-10-WBVMS-916-02-DD | Subscription license for FortiWeb-VM (1 CPU) with Standard bundle included. |
| FortiWeb-VM01-S Advanced | FC1-10-WBVMS-633-02-DD | Subscription license for FortiWeb-VM (1 CPU) with Advanced bundle included. |
| FortiWeb-VM02-S Standard | FC2-10-WBVMS-916-02-DD | Subscription license for FortiWeb-VM (2 CPU) with Standard bundle included. |
| FortiWeb-VM02-S Advanced | FC2-10-WBVMS-633-02-DD | Subscription license for FortiWeb-VM (2 CPU) with Advanced bundle included. |
| FortiWeb-VM04-S Standard | FC3-10-WBVMS-916-02-DD | Subscription license for FortiWeb-VM (4 CPU) with Standard bundle included. |
| FortiWeb-VM04-S Advanced | FC3-10-WBVMS-633-02-DD | Subscription license for FortiWeb-VM (4 CPU) with Advanced bundle included. |
| FortiWeb-VM08-S Standard | FC4-10-WBVMS-916-02-DD | Subscription license for FortiWeb-VM (8 CPU) with Standard bundle included. |
| FortiWeb-VM08-S Advanced | FC4-10-WBVMS-633-02-DD | Subscription license for FortiWeb-VM (8 CPU) with Advanced bundle included. |



www.fortinet.com

Copyright © 2021 Fortinet, Inc. All rights reserved. Fortinet®, FortiGate®, FortiCare® and FortiGuard®, and certain other marks are registered trademarks of Fortinet, Inc., and other Fortinet names herein may also be registered and/or common law trademarks of Fortinet. All other product or company names may be trademarks of their respective owners. Performance and other metrics contained herein were attained in internal lab tests under ideal conditions, and actual performance and other results may vary. Network variables, different network environments and other conditions may affect performance results. Nothing herein represents any binding commitment by Fortinet, and Fortinet disclaims all warranties, whether express or implied, except to the extent Fortinet enters a binding written contract, signed by Fortinet's General Counsel, with a purchaser that expressly warrants that the identified product will perform according to certain expressly-identified performance metrics and, in such event, only the specific performance metrics expressly identified in such binding written contract shall be binding on Fortinet. For absolute clarity, any such warranty will be limited to performance in the same ideal conditions as in Fortinet's internal lab tests. Fortinet disclaims in full any covenants, representations, and guarantees pursuant hereto, whether express or implied. Fortinet reserves the right to change, modify, transfer, or otherwise revise this publication without notice, and the most current version of the publication shall be applicable.